

Nidec

尼得科

All for dreams

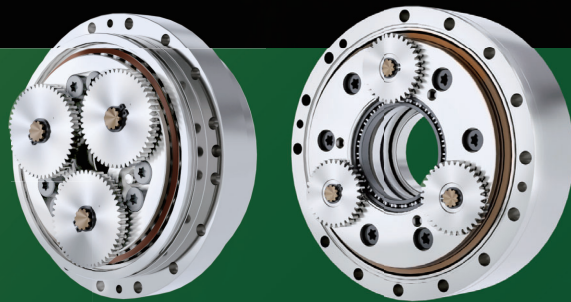
KINEX

EH 系列

EH series

高精度大尺寸减速机

High Precision Large Size Reducer



尼得科传动技术(浙江)有限公司

NIDEC DRIVE TECHNOLOGY (ZHEJIANG) CORPORATION

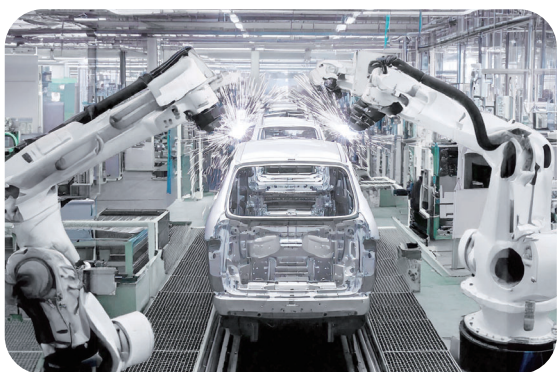
EH-N

实心轴型 Solid shaft type

实心轴型（EH-N 型）采用电机与减速机共轴集成设计，可实现高扭矩密度。

该设计降低了机械复杂度并优化了空间利用率，非常适合需要兼顾紧凑性与动力的应用场景。

The solid shaft type (EH-N type) offers high torque density by integrating the motor and reducer on the same shaft. This design reduces mechanical complexity and optimizes space usage, making it ideal for applications that require both compactness and power.



1 高刚性 HIGH RIGIDITY

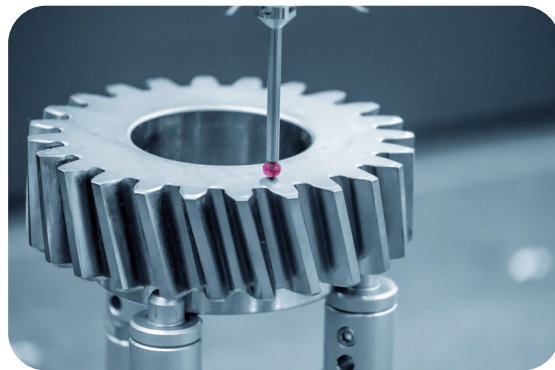
KINEX 系列减速机凭借高精度特性，可在弧焊等多种应用中实现精确定位，确保超低背隙与可靠性能。

KINEX series gearbox offers exceptional high rigidity, designed specifically for six-axis robots to ensure stability, minimize deformation under heavy loads, and deliver reliable, high-torque performance.

2 高精度 HIGH ACCURACY

KINEX 系列减速机具备突出的高刚性，专为六轴机器人设计，可确保运行稳定性，最大限度地减少重载下的形变，并提供可靠的高扭矩性能。

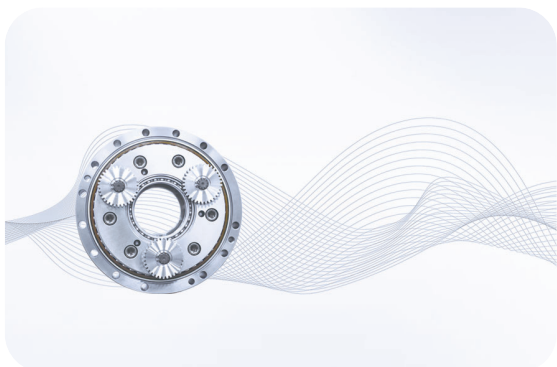
KINEX series gearbox offers high accuracy for precise positioning in diverse applications, including arc welding, ensuring minimal backlash and reliable performance.



3 低噪音 LOW NOISE

本公司的创新型齿轮减速机针对传统机型常见的噪音问题，提供低噪音解决方案，可提升效率并改善整体用户体验。

Our innovative gear reducers tackle the noise issues commonly associated with traditional models, providing a low-noise solution that enhances efficiency and improves the overall user experience.



EH-C

中空轴型 Hollow shaft type



EH-C 型采用空心轴结构，允许电缆和连接件穿过，非常适合内部布线，并支持电机与减速机的偏移设计。

The EH-C type's design features a hollow shaft allowing for cables and connections to pass through - ideal for internal wiring - and enabling an offset design for the motor and reducer.

使用尼得科减速机实现精准运动

Achieve excellent motion with Nidec gearbox

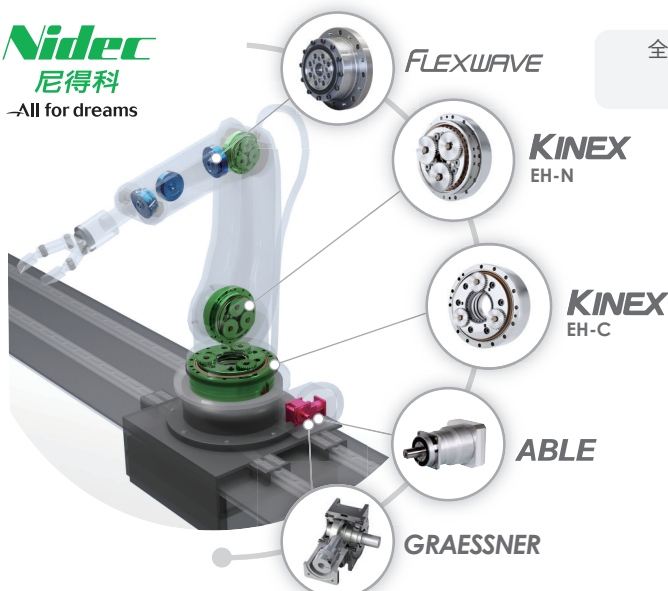
本公司提供定制化解决方案，兼顾性能与成本效益，涵盖从低精度到高精度的各种规格——全方位一站式服务，满足您的所有需求。

We deliver tailored solutions that blend performance and cost-efficiency across various sizes, from low to high precision — your all-in-one solution for every need.



一站式减速机解决方案 One-Stop Gearbox Solutions

Nidec
尼得科
—All for dreams



全面的减速机产品阵容，实现简化采购、便捷维护与高效库存管理
A Comprehensive Gearbox Lineup For Streamlined Purchasing, Easy Maintenance, And Efficient Stock Management

与现有品牌尺寸一致，可完全兼容替换
Consistent Dimensions With Existing Brands As A Fully Compatible Replacement

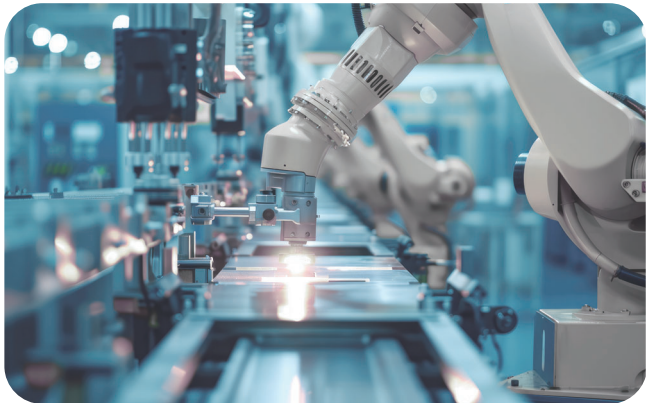
高扭转刚性 & 低背隙，确保运行平稳
High Torsional Rigidity & Low Backlash For Smooth Running

可提供定制化减速机
Customized Gearbox Available

应用方式 Application

本公司的新型减速机采用轻量化紧凑型设计，具备零背隙和高输出扭矩特性，确保高刚性，非常适合机器人应用、自动工具及其他需要极高定位精度的机械设备。

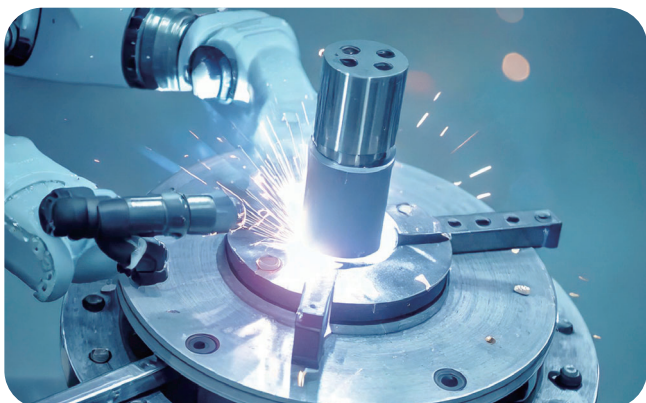
Our new gearboxes feature zero backlash and high output torque in a lightweight, compact design, ensuring high stiffness, making them ideal for robotic applications, automatic tools and other machinery that require exceptional positional accuracy.



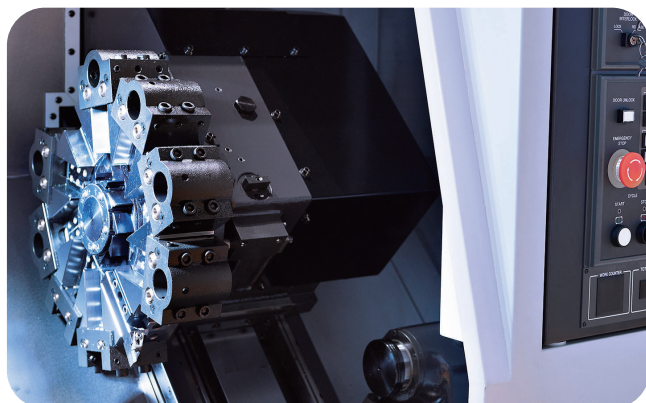
关节型机器人 Articulated Robot



晶圆传输机器人 Wafer-transfer Robot



定位器 Positioner



自动换刀装置 Automatic Tool Changer



回转头 Turret Head



分度工作台 Index Table

型号 Model Nomenclature

EH	—		—	
系列 Series		尺寸 Size	类型 Type	减速比 Ratio
		N : 25,42,80,125 C : 50,120	N : 实心轴型 Solid shaft type C : 中空轴型 Hollow shaft type	

规格 Specification

产品型号 Product Model	*1 减速比 Ratio		额定扭矩 Rated torque (Nm)	额定输出转速 Rated output Speed (rpm)	额定使用寿命 Rated service life (h)	容许加速 / 减速扭矩 Allowable acceleration / deceleration torque (Nm)	瞬时最大容许扭矩 Momentary maximum allowable torque (Nm)	背隙 / 空转 Backlash / Lost motion (arc min)	传动角精度 Transmission Angular Accuracy (arc sec)	容许力矩 Allowable moment (Nm)	瞬时容许力矩(最大值) Momentary allowable moment(Max.) (Nm)	质量 Mass (kg)
	输出法兰旋转 Output flange rotation	基座旋转 Frame Rotation										
EH-25N	41	40	245	15	6,000	612	1,225	1.0/1.0	70	784	1,568	3.8
	81	80										
	107.67	106.67										
	126	125										
	137	136										
	164.07	163.07										
EH-42N	41	40	412	15	6,000	1,029	2,058	1.0/1.0	60	1,660	3,320	6.3
	81	80										
	105	104										
	126	125										
	141	140										
	164.08	163.08										
EH-80N	41	40	784	15	6,000	1,960	3,920	1.0/1.0	50	2,150	4,300	9.8
	81	80										
	101	100										
	129	128										
	141	140										
	171	170										
EH-125N	41	40	1,225	15	6,000	3,062	6,125	1.0/1.0	50	3,430	6,860	15
	81	80										
	102.18	101.18										
	121	120										
	145.62	144.62										
	161	160										
EH-50C	32.54	31.54	490	15	6,000	1,225	[Bolt] 2,450	1.0/1.0	60	1,764	3,528	16.4
EH-120C	36.75	35.75	1,177	15	6,000	2,940	5,880	1.0/1.0	50	3,920	7,350	21.2

- 当减速机在低温环境下使用时，空载运行扭矩将会增大。选择电机时请谨慎。
- 如果您需要上述以外的减速比，或对电机选型有任何疑问，请联系本公司的销售代表。
- 上述规格基于本公司的评估方法。请先确认产品在实际安装设备的运行条件下无问题后再使用。

*1. 额定扭矩是指在额定输出转速下运行时，与额定使用寿命相对应的扭矩值，并不代表负载的上限。

*2. 容许力矩会根据轴向负载的不同而异。

- No-load running torque will increase when the reducer is used at low temperature. Please be careful when selecting a motor.
- If you require a reduction ratio other than the above, or if you have any questions regarding motor selection, please contact our sales representative.
- The above specifications are based on our evaluation method. The customer is requested to use the product only after confirming that there are no problems under the operating conditions of the actual equipment to be installed.

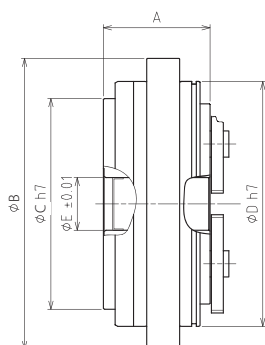
*1. The rated torque is the torque value that corresponds to the rated lifetime when operating at the rated output rotation speed, and does not indicate the upper limit of the load.

*2. The allowable moment changes depending on the axial load.

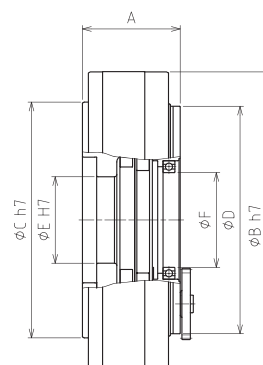
尺寸表 Dimension Table

尺寸/类型 Size / Type		EH-25N	EH-42N	EH-80N	EH-125N	EH-50C	EH-120C
A [宽度] (Width)	mm	62	66	75	81	79	82.5
B [外径] (Outer diameter)	mm	133	159	189	221	222	250
C [输出侧嵌入部直径] (Output side pilot diameter)	mm	94	118	140	160	176	199
D [输入侧嵌入部直径] (Input side pilot diameter)	mm	113	136	160	186	169	192
E [中心孔直径] (Center hole diameter)	mm	24	30	35	40	66	73
F [轴承内径] (Inner diameter of the Bearing)	mm	-				65(-0.015 to 0)	80(-0.015 to 0)

实心轴型
Solid shaft type



中空轴型
Hollow shaft type





全球销售，服务与支持 WORLDWIDE SALES, SERVICE & SUPPORT

尼得科传动技术株式会社	总公司・Nidec PARK C 栋，京都府向日市森本町东之口 1 番地 1 邮编 617-0003	+81-75-280-3777
NIDEC DRIVE TECHNOLOGY KOREA CORPORATION	서울특별시 구로구 디지털로 34길 55, 코오롱사이언스밸리2차 317호	+82-2-2038-3537
台湾尼得科传动技术股份有限公司	台中市西屯区台湾大道	+886-4-2358-2628
尼得科传动技术（浙江）有限公司	浙江省平湖市经济开发区平成路	+86-573-85098651
尼得科机工传动技术（上海）有限公司	上海市长宁区遵义路 100 号	+86-21-64400700
NIDEC DRIVE TECHNOLOGY INDIA PRIVATE LIMITED	BVR Lake Front, No. 40/32/50/1/2, Nagavara Village, Kasaba Hobli, Near Ring Road, Veerannapalya, Arabi College Post, Bangalore -560 045, India	+91-80-4953-6579
NIDEC DESCH ANTRIEBSTECHNIK GmbH & Co.KG	Kleinbahnstraße 21, 59759 Arnsberg, Germany	+49-2932-300-0
NIDEC GRAESSNER GmbH & Co.KG	Kuchenäcker 11, 72135 Dettenhausen, Germany	+49-7157-1230
NIDEC DRIVE TECHNOLOGY AMERICA CORPORATION	175 Wall Street, Glendale Heights, IL60139, USA	+1-800-842-1479
NIDEC DRIVE TECHNOLOGY DO BRASIL Ltda.	Rua Luis Gois, 1586, S34-A, São Paulo – SP 04043-200 Brazil	+55-11-5071-0015



YouTube



@尼得科传动技术
@NIDEC DRIVE TECHNOLOGY

Instagram



@desch_集团
@desch_group

欧洲 Europe

LinkedIn



@DESCH 集团
@DESCH Group

欧洲 Europe



@NIDEC DRIVE TECHNOLOGY
AMERICA

美国 USA

尼得科传动技术(浙江)有限公司

NIDEC DRIVE TECHNOLOGY (ZHEJIANG) CORPORATION

〈网页信息 Web Page Information〉

请扫描二维码或访问以下网址。Please scan the QR code or access the URL below.



联系我们 Contact Us

[https://www.nidec.com/en/
nidec-drivetechnology/inquiry/](https://www.nidec.com/en/nidec-drivetechnology/inquiry/)



销售办事处 Sales Offices

[https://www.nidec.com/en/
nidec-drivetechnology/corporate/
network/sales/](https://www.nidec.com/en/nidec-drivetechnology/corporate/network/sales/)